

FLOOR PLAN
 SCALE: 1/4" = 1'-0"

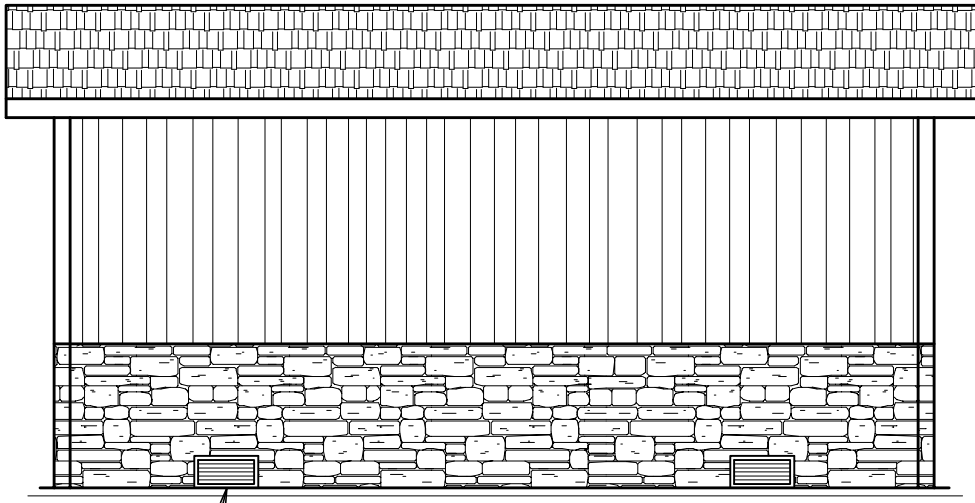
N.P.C.A. CERTIFIED PLANT
 &
 MEMBER OF:
 NATIONAL & WISCONSIN PRECAST CONCRETE ASSOCIATIONS

THIS DRAWING SHALL NOT
 BE COPIED OR SUBMITTED
 TO OTHERS WITHOUT THE
 CONSENT OF THIS COMPANY.

4154 123rd STREET
 CHIPPEWA FALLS, WI 54729
 (715) 723-7446 * (800) 924-1516
 FAX (715) 723-7111 * www.huffcutt.com

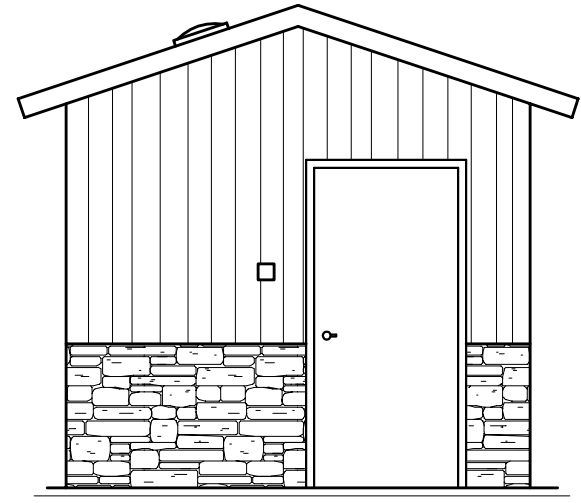


PROJECT:
 RR200
 BUILDING



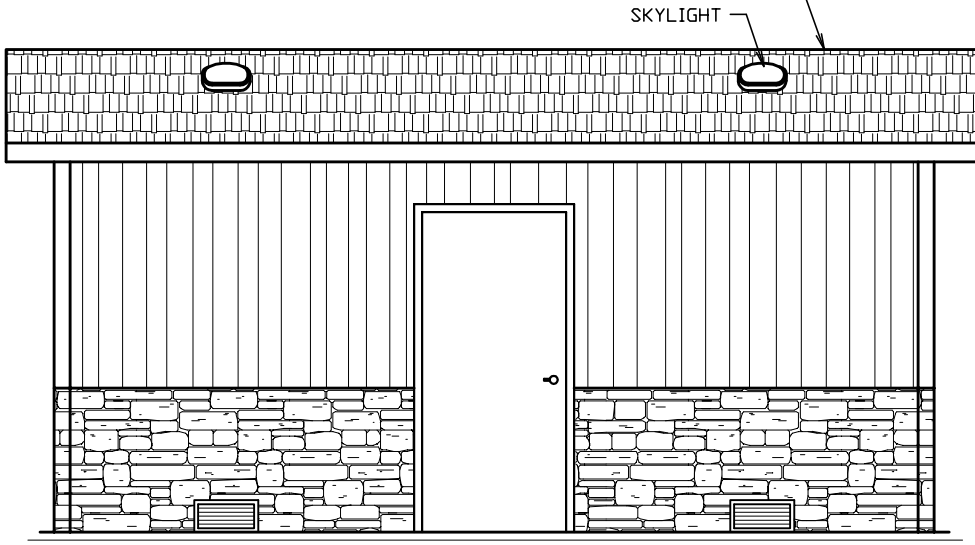
16" x 8" CAST ALUMINUM VENT

FRONT ELEVATION
SCALE: 1/4" = 1'-0"

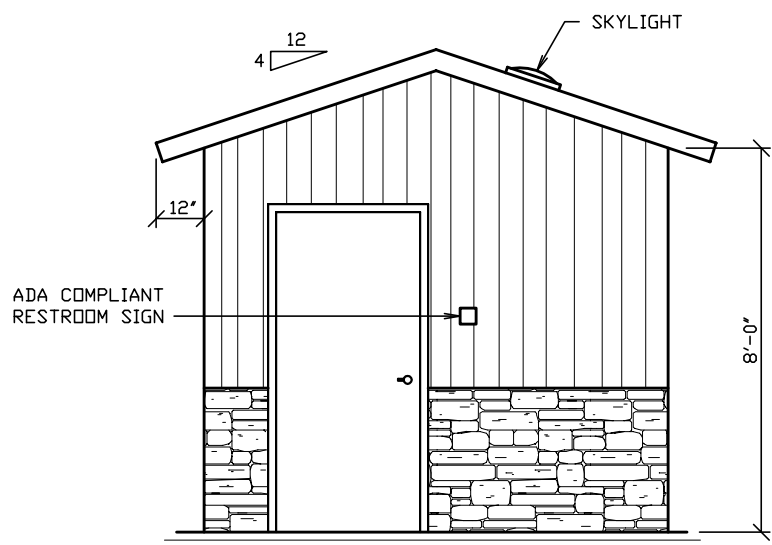


LEFT ELEVATION
SCALE: 1/4" = 1'-0"

5" CONCRETE ROOF PANELS WITH CEDAR SHAKE SHINGLE APPEARANCE



REAR ELEVATION
SCALE: 1/4" = 1'-0"



RIGHT ELEVATION
SCALE: 1/4" = 1'-0"

N.P.C.A. CERTIFIED PLANT & MEMBER OF: NATIONAL & WISCONSIN PRECAST CONCRETE ASSOCIATIONS

THIS DRAWING SHALL NOT BE COPIED OR SUBMITTED TO OTHERS WITHOUT THE CONSENT OF THIS COMPANY.

4154 123RD STREET
CHIPPEWA FALLS, WI 54729
(715) 723-7446 * (800) 924-1516
FAX (715) 723-7111 * www.huffcutt.com

HUFFCUTT
CONCRETE, INC



PROJECT:
RR200
BUILDING