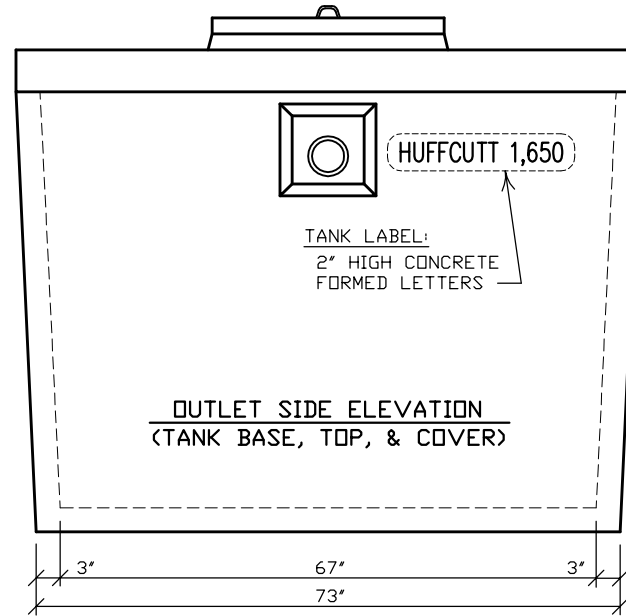


FLOOR PLAN
(TANK BASE)

NOTE: ADDITIONAL BAFFLE FOR GREASE INTERCEPTOR.



OUTLET SIDE ELEVATION
(TANK BASE, TOP, & COVER)

TANK LABEL:
2" HIGH CONCRETE
FORMED LETTERS

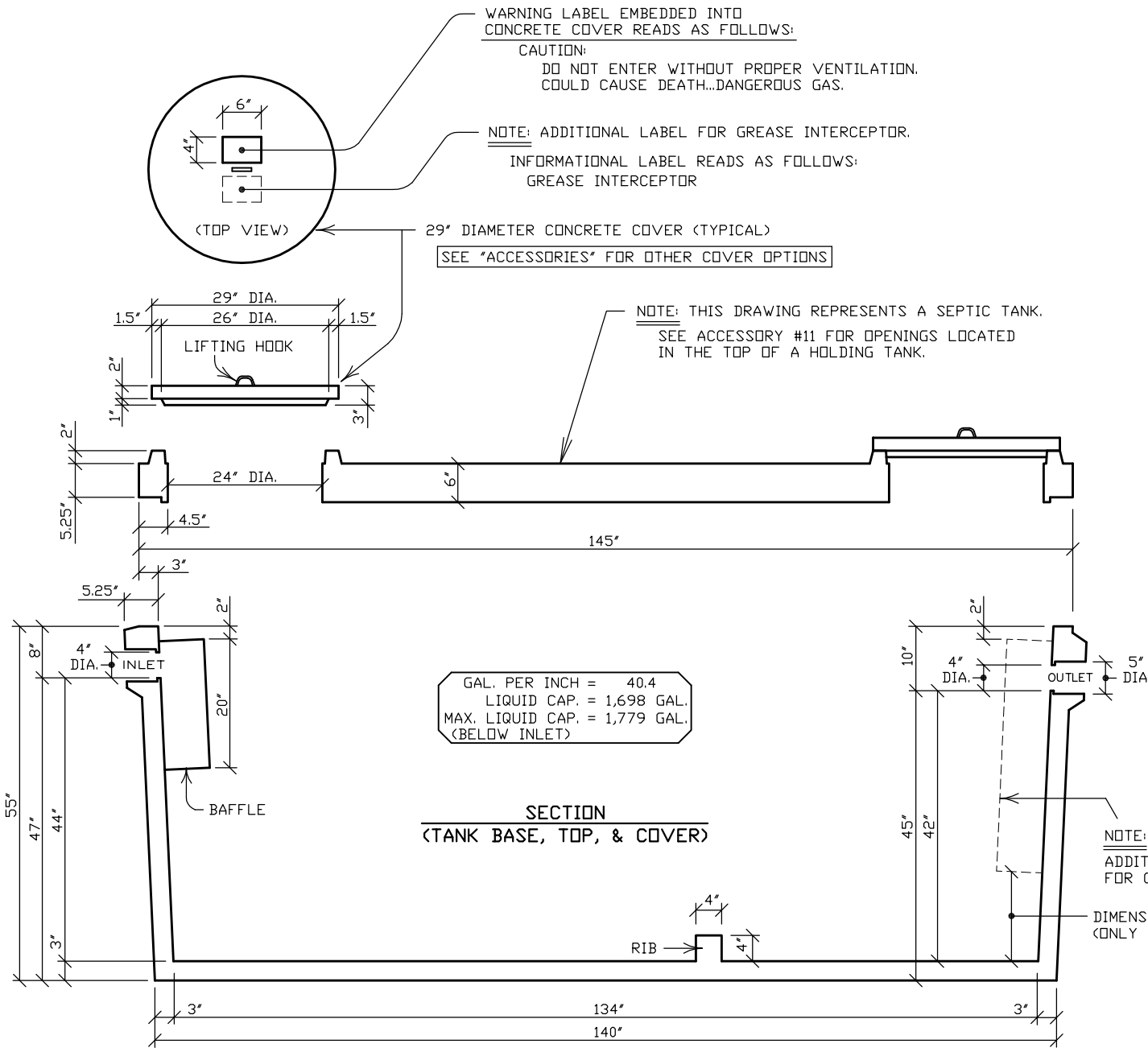
HUFFCUTT 1,650

N.P.C.A. CERTIFIED PLANT
&
MEMBER OF:
NATIONAL & WISCONSIN PRECAST CONCRETE ASSOCIATIONS

THIS DRAWING SHALL NOT
BE COPIED OR SUBMITTED
TO OTHERS WITHOUT THE
CONSENT OF THIS COMPANY.

HUFFCUTT CONCRETE, INC. 4154 123rd STREET
CHIPPEVA FALLS, WI 54729
(715) 723-7446 * FAX (715) 723-7111 * (800) 924-1516 * www.huffcutt.com

TANK:
1,650 GAL. LDW PROFILE
PUMP, SEPTIC, HOLDING,
OR GREASE INTERCEPTOR



WARNING LABEL EMBEDDED INTO CONCRETE COVER READS AS FOLLOWS:
 CAUTION:
 DO NOT ENTER WITHOUT PROPER VENTILATION.
 COULD CAUSE DEATH...DANGEROUS GAS.

NOTE: ADDITIONAL LABEL FOR GREASE INTERCEPTOR.
 INFORMATIONAL LABEL READS AS FOLLOWS:
 GREASE INTERCEPTOR

29" DIAMETER CONCRETE COVER (TYPICAL)
 SEE "ACCESSORIES" FOR OTHER COVER OPTIONS

NOTE: THIS DRAWING REPRESENTS A SEPTIC TANK.
 SEE ACCESSORY #11 FOR OPENINGS LOCATED
 IN THE TOP OF A HOLDING TANK.

GAL. PER INCH = 40.4
 LIQUID CAP. = 1,698 GAL.
 MAX. LIQUID CAP. = 1,779 GAL.
 (BELOW INLET)

SECTION
 (TANK BASE, TOP, & COVER)

NOTE:
 ADDITIONAL BAFFLE
 FOR GREASE INTERCEPTOR.

DIMENSION EQUALS 1/3 LIQUID LEVEL.
 (ONLY FOR GREASE INTERCEPTOR)

N.P.C.A. CERTIFIED PLANT
 &
 MEMBER OF:
 NATIONAL & WISCONSIN PRECAST CONCRETE ASSOCIATIONS

THIS DRAWING SHALL NOT
 BE COPIED OR SUBMITTED
 TO OTHERS WITHOUT THE
 CONSENT OF THIS COMPANY.

HUFFCUTT CONCRETE, INC. 4154 123rd STREET
 CHIPPEWA FALLS, WI 54729
 (715) 723-7446 * FAX (715) 723-7111 * (800) 924-1516 * www.huffcutt.com

TANK:
 1,650 GAL. LDW PROFILE
 PUMP, SEPTIC, HOLDING,
 OR GREASE INTERCEPTOR

