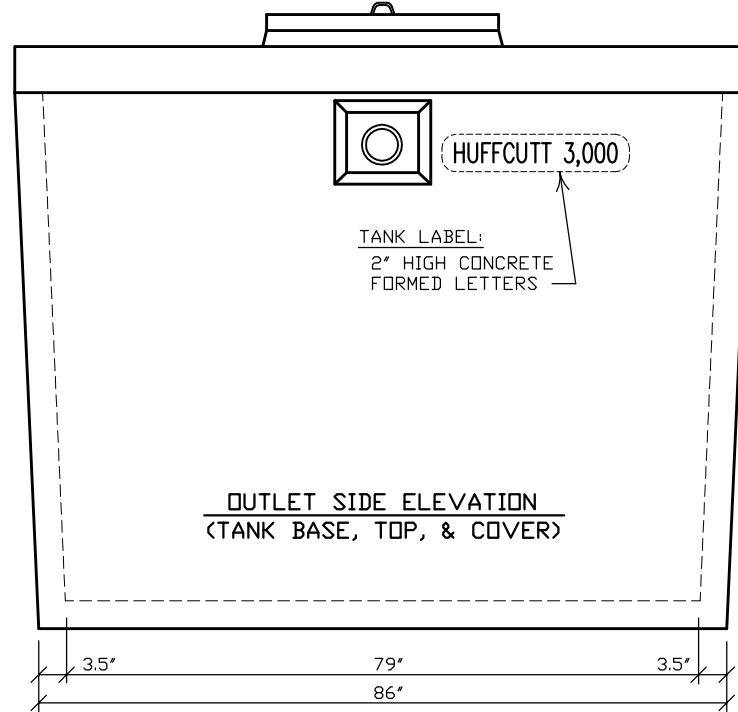


FLOOR PLAN
(TANK BASE)



OUTLET SIDE ELEVATION
(TANK BASE, TOP, & COVER)

TANK LABEL:
2" HIGH CONCRETE
FORMED LETTERS

NOTE: ADDITIONAL BAFFLE FOR GREASE INTERCEPTOR.

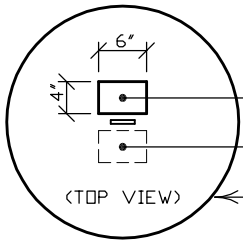
N.P.C.A. CERTIFIED PLANT
&
MEMBER OF:
NATIONAL & WISCONSIN PRECAST CONCRETE ASSOCIATIONS

THIS DRAWING SHALL NOT
BE COPIED OR SUBMITTED
TO OTHERS WITHOUT THE
CONSENT OF THIS COMPANY.

HUFFCUTT CONCRETE, INC. 4154 123rd STREET
CHIPPEWA FALLS, WI 54729
(715) 723-7446 * FAX (715) 723-7111 * (800) 924-1516 * www.huffcutt.com

TANK:
3,000 H.D. LOW PROFILE
SEPTIC OR
GREASE INTERCEPTOR

1
R
N



(TOP VIEW)

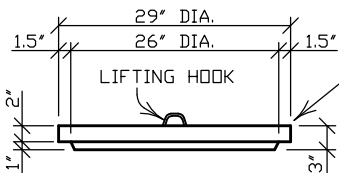
WARNING LABEL EMBEDDED INTO CONCRETE COVER READS AS FOLLOWS:

CAUTION:
DO NOT ENTER WITHOUT PROPER VENTILATION.
COULD CAUSE DEATH...DANGEROUS GAS.

NOTE: ADDITIONAL LABEL FOR GREASE INTERCEPTOR.
INFORMATIONAL LABEL READS AS FOLLOWS:
GREASE INTERCEPTOR

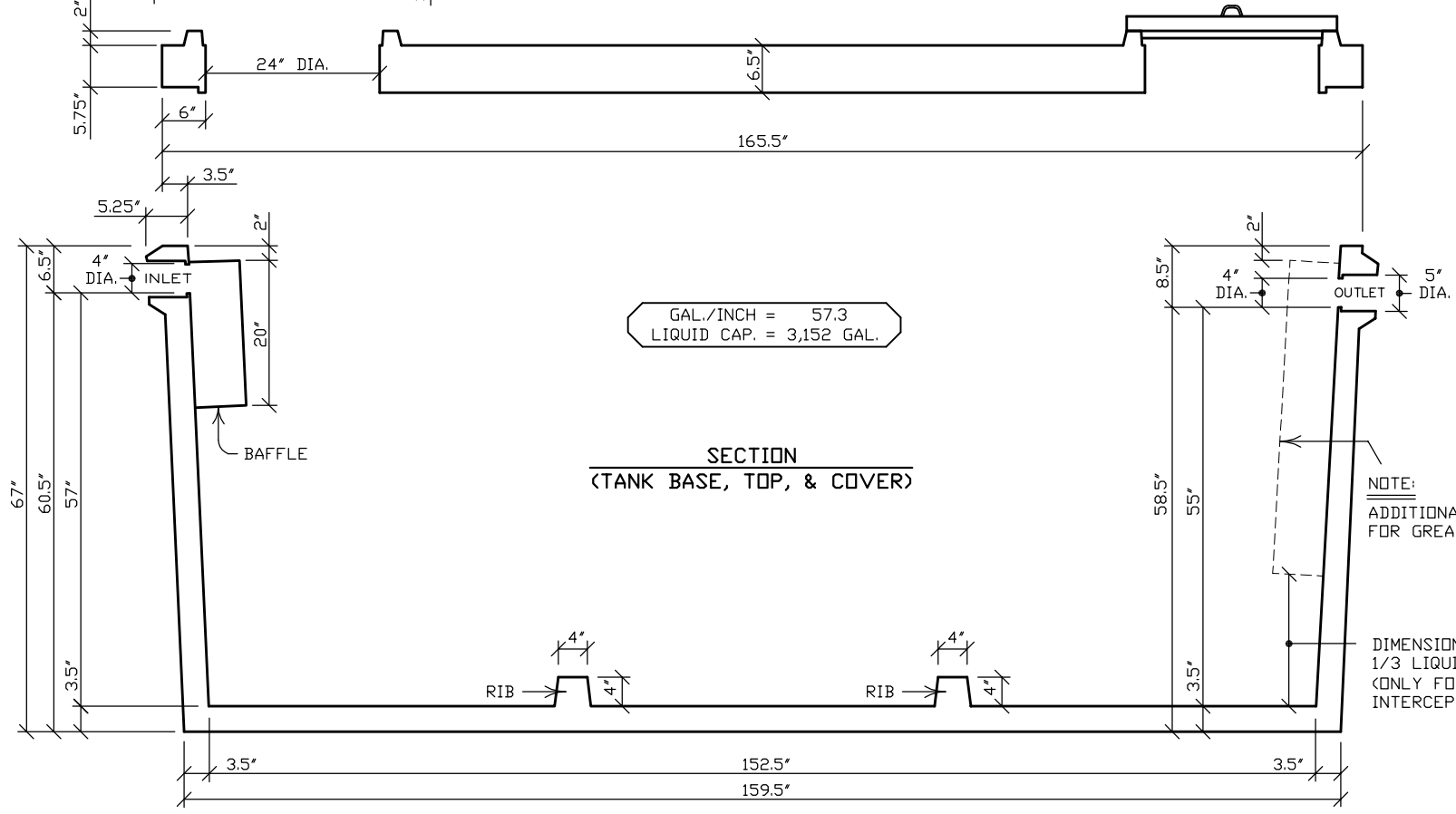
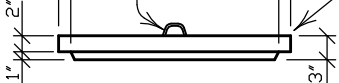
29" DIAMETER CONCRETE COVER (TYPICAL)

SEE "ACCESSORIES" FOR OTHER COVER OPTIONS



29" DIA.
26" DIA.
1.5"

LIFTING HOOK



GAL./INCH = 57.3
LIQUID CAP. = 3,152 GAL.

SECTION
(TANK BASE, TOP, & COVER)

NOTE:
ADDITIONAL BAFFLE FOR GREASE INTERCEPTOR.

DIMENSION EQUALS 1/3 LIQUID LEVEL.
(ONLY FOR GREASE INTERCEPTOR)

N.P.C.A. CERTIFIED PLANT
&
MEMBER OF:
NATIONAL & WISCONSIN PRECAST CONCRETE ASSOCIATIONS

THIS DRAWING SHALL NOT BE COPIED OR SUBMITTED TO OTHERS WITHOUT THE CONSENT OF THIS COMPANY.

HUFFCUTT CONCRETE, INC. 4154 123rd STREET
CHIPPEWA FALLS, WI 54729
(715) 723-7446 * FAX (715) 723-7111 * (800) 924-1516 * www.huffcutt.com

TANK:
3,000 H.D. LOW PROFILE
SEPTIC OR
GREASE INTERCEPTOR

