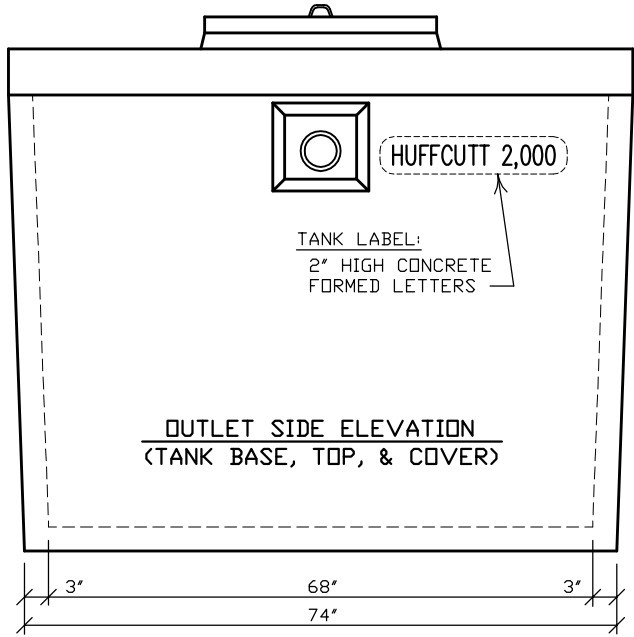


NOTE: ADDITIONAL BAFFLE FOR GREASE INTERCEPTOR.



N.P.C.A. CERTIFIED PLANT
&
MEMBER OF:
NATIONAL & WISCONSIN PRECAST CONCRETE ASSOCIATIONS

THIS DRAWING SHALL NOT
BE COPIED OR SUBMITTED
TO OTHERS WITHOUT THE
CONSENT OF THIS COMPANY.

HUFFCUTT CONCRETE, INC. 4154 123rd STREET
CHIPPEVA FALLS, WI 54729
(715) 723-7446 * FAX (715) 723-7111 * (800) 924-1516 * www.huffcutt.com

TANK:
2,000 GAL. LDW. PROFILE
SEPTIC OR
GREASE INTERCEPTOR

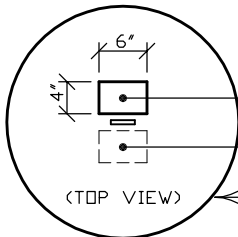
1
R
N

WARNING LABEL EMBEDDED INTO
CONCRETE COVER READS AS FOLLOWS:

CAUTION:
DO NOT ENTER WITHOUT PROPER VENTILATION.
COULD CAUSE DEATH...DANGEROUS GAS.

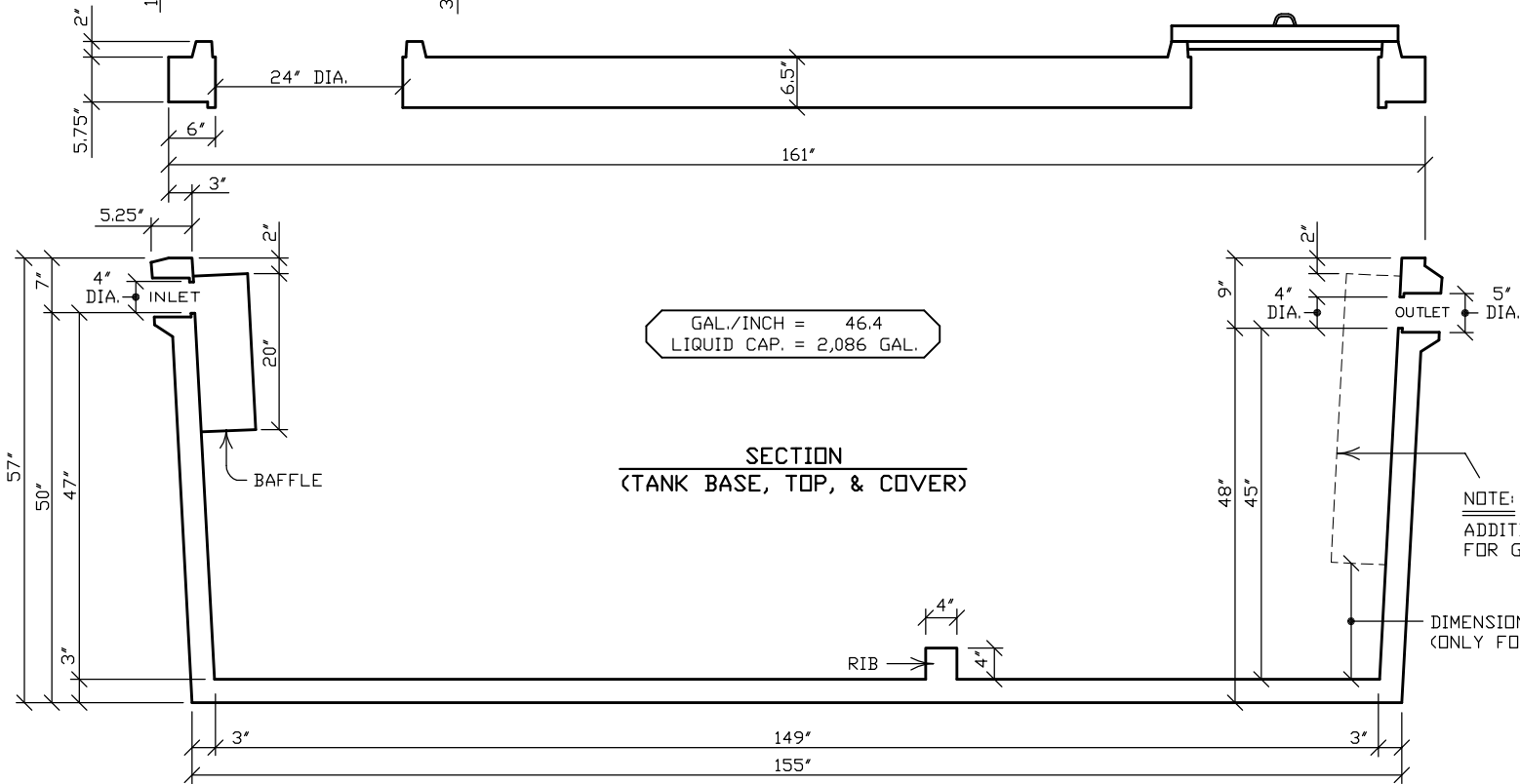
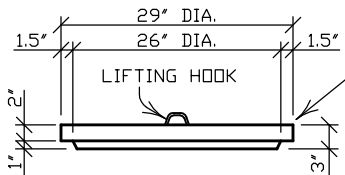
NOTE: ADDITIONAL LABEL FOR GREASE INTERCEPTOR.

INFORMATIONAL LABEL READS AS FOLLOWS:
GREASE INTERCEPTOR



29" DIAMETER CONCRETE COVER (TYPICAL)

SEE "ACCESSORIES" FOR OTHER COVER OPTIONS



GAL./INCH = 46.4
LIQUID CAP. = 2,086 GAL.

SECTION
(TANK BASE, TOP, & COVER)

NOTE:
ADDITIONAL BAFFLE
FOR GREASE INTERCEPTOR.

DIMENSION EQUALS 1/3 LIQUID LEVEL.
(ONLY FOR GREASE INTERCEPTOR)

N.P.C.A. CERTIFIED PLANT
&
MEMBER OF:
NATIONAL & WISCONSIN PRECAST CONCRETE ASSOCIATIONS

THIS DRAWING SHALL NOT
BE COPIED OR SUBMITTED
TO OTHERS WITHOUT THE
CONSENT OF THIS COMPANY.

HUFFCUTT CONCRETE, INC. 4154 123rd STREET
CHIPPEWA FALLS, WI 54729
(715) 723-7446 * FAX (715) 723-7111 * (800) 924-1516 * www.huffcutt.com

TANK:
2,000 GAL. LOW PROFILE
SEPTIC OR
GREASE INTERCEPTOR

